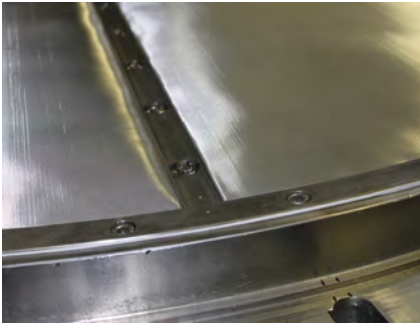


There are several media options available for a ZWAG filter.

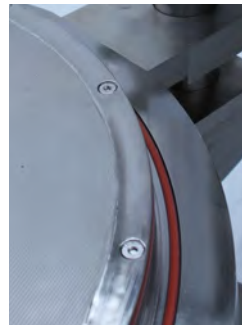
Removable or Welded Media



Stainless Screen with Span Ring

Removable Media

The screens are most commonly installed onto the bottom dish by means of a span ring that is bolted through the media.

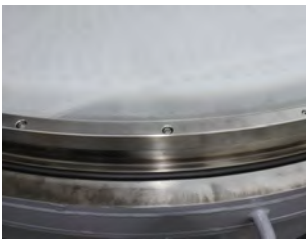


Welded to Span Ring

Welded Media

There are specialty welded metal multi-layer screens available. The filter media is welded directly onto the span ring.

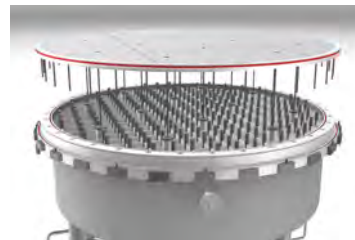
Interior or Exterior Span Ring Hardware



Interior Span Ring Bolts

Interior Hardware

Span ring is installed from the top but bolted into place from the bottom, this puts the hardware in contact with the product during filtration.



Exterior Span Ring Bolts

Exterior Hardware

Span ring is installed from the top but bolted into place from the bottom, where there is no contact between the hardware and product during filtration.

Materials & Pore Sizes

The screen is available in many different materials and weaves. You can contact Steri's engineering team for advice on selecting the right screen for your application.

Frequently used wire screens:

- 304L, 316L & 317L Stainless Steel
- 904L Stainless Steel
- Hastelloy C-276, C-22, B-3. G30...
- Inconel 625
- Nickel

Frequently used cloths:

- Nylon
- PTFE
- Polypropylene
- Polyethylene

The smallest pore size we offer is 5 micron.

